

MOMODESIGN



HELMETS

Redefining

The Urban Standard







# reddot award 2019 best of the best



MOMODESIGN Style Centre has won the RED DOT Award: Product Design 2019 with the jet helmet Aero receiving the Red Dot - Best of the Best, the top distinction in the competition.

The Red Dot Award: Product Design is one of the world's largest design competitions. In 2019, designers and manufacturers from 55 countries entered more than 5,500 products in the competition. Only 1.5% of the objects entered won a Red Dot: Best of the Best.

This award represents an important success for the MOMODESIGN Style Center that with the Jet AERO, introduces a new generation of motorbike helmets, exceeding its principles and combining the innovative design with high functionality.

A design oriented to functionality and safety where connectivity, great aerodynamics and temperature control become the strengths of this new motorcycle helmet.





full-face  
composite fiber

**HORNET**



full-jet with innovative long visor  
ABS

**AERO**



full-jet with sun visor  
composite fiber

**ZERO**



full-jet with sun visor  
composite fiber

**ZERO-PURE**



full-jet with sun visor  
ABS

**EAGLE**



full-jet with sun visor  
ABS

**EAGLE-PURE**

# HELMET RANGE

**BLADE**

full-jet with sun visor  
ABS



**FGTR RANGE**

demi-jet with mid visor  
ABS



**FGTR BABY**

demi-jet with mid visor  
ABS



**AVIO PRO**

demi-jet with mid visor  
composite fiber



**MINIMOMO**

demi-jet with sun visor  
ABS



PROUD PARTNER OF



1<sup>ST</sup> GRAPHENE  
MOTORBIKE  
HELMET

GRAPHENE

# AERO

AERO is the new jet born from military and futuristic inspirations, projected in MOMODESIGN Style Centre. It has got a unique and compact design, with a strong personality that encloses in itself all the features of a premium product: great aerodynamics, an innovative "patent pending" visor movement, an intelligent ventilation system, all for a top-level safety. AERO is a Made in Italy product with a high technology content.



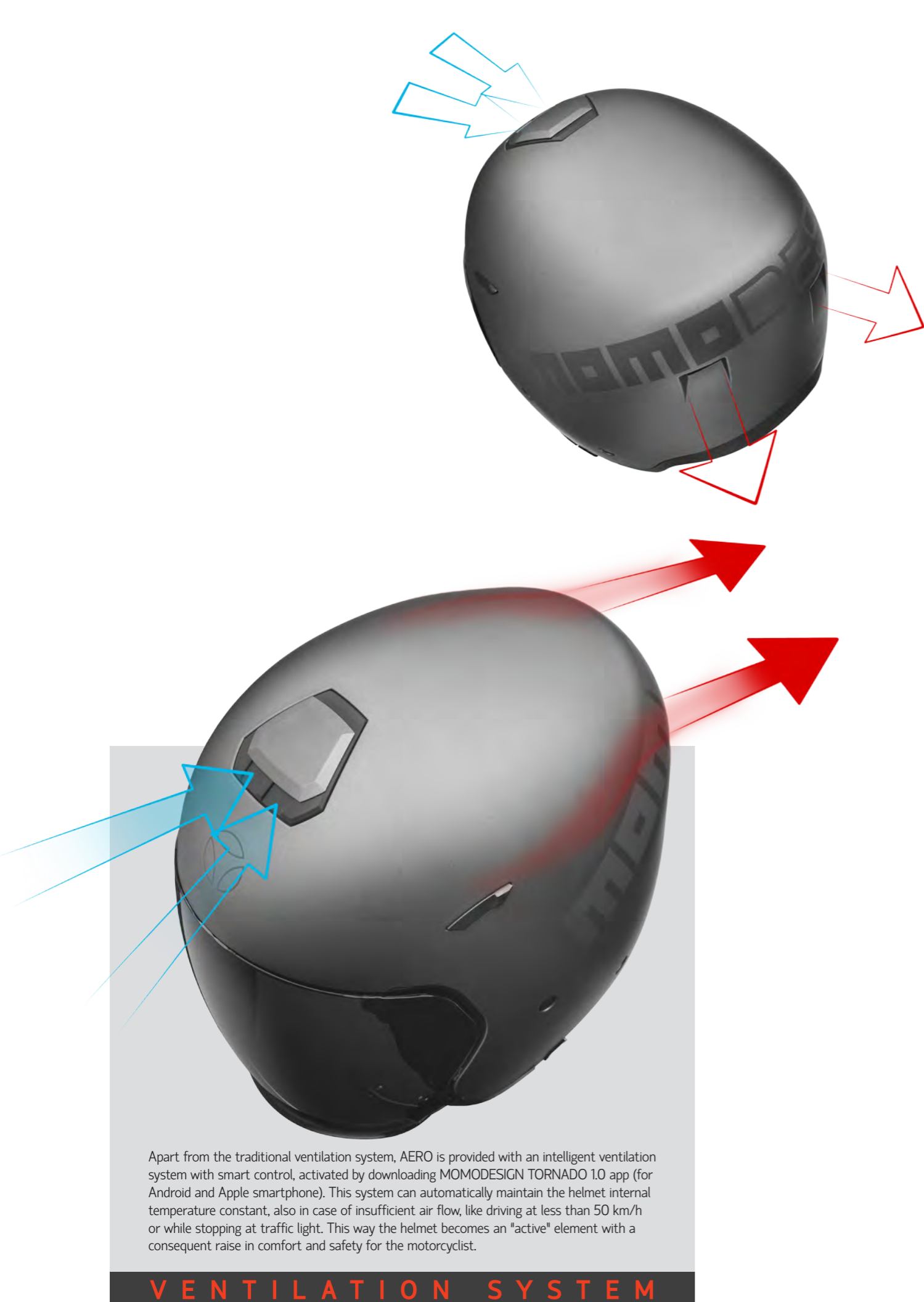
## INTERNAL MECHANISM

The wide Antiscratch and Antifog transparent external visor has been realized flush with the shell. The classic external visor movement has been eliminated, and a new visor system of "patent pending" has been projected and patented. The integrated system IVS has been obtained from the space between the shell and the EPS, and guarantees a great refinement in figure as far as design, the absence of aerodynamic whispers as far as comfort, and as far as safety the reduction of cervical injury from helmet tripping on the asphalt after accident. The two springs positioned in the IVS make the visor movement extremely fluent following the rising of the visor while opening, and stopping it while closing, thus avoiding the fortuitous opening.

innovative  
visor  
movement  
system

I.V.S. (PATENT PENDING)







## DESIGNED BY THE WIND

AERO has been thought as a single entity, where the shell shape meets and merges the wide external visor, its shape proposes a new design concept planned to give the helmet greater aerodynamics and raise its performance. Thanks to its unique and compact design, AERO gives the customer a broad visibility and noislessness.

aerodynamic  
shell  
design  
**A.S.D.**

## MORE STABILITY



AERO is also supplied with UV400 sun visor, it has wide visibility and an internal flush activation mechanism commanded by a running on shell board.

## SUN VISOR

## NO GAP VISOR

The wide Antiscratch and Antifog transparent external visor has been realized flush with the shell.



## TORNADO APP

Tornado is an app that runs the system of forced ventilation with a magnetic levitated fan with a capacity of 5 air litres per minute (6 in "turbo" function).

**Loudness** limited to 16 db at full capacity. **Battery** 1,8A 3,7v li-ion battery rechargeable in 1,5 h through micro usb and 1A power charger.

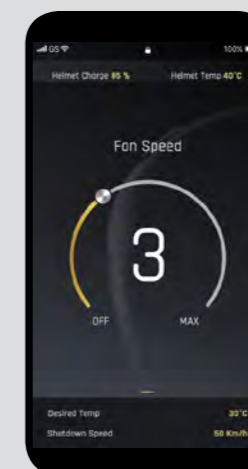
**System functioning** 8h in urban environment condition between -20 and 40 c°.

**Connection** through Bluetooth protocol. **GPS module integrated** and temperature probe that registers internal temperature in the upper part of the helmet.

MOMODESIGN VENT COMFORT software can be set up from Your smartphone through the APP MOMODESIGN TORNADO 1.0, it is independent and autonomous and runs the magnetic levitated vent in a smart way.

Through the APP You can set:

- desired temperature (the software decides fan speed according to internal temperature and cruising speed)
- fan control (Fan Control function);
- TURBO VENT function in high temperature condition guarantees the maximum refreshment (thus reducing battery duration);
- ECO function that optimizes battery duration;
- Helmet internal temperature monitoring while driving.





# COLORS RANGE

# SIZES

little shell - **XXS** 54cm - **XS** 55cm **S** 56cm - **M** 57cm  
 big shell - **ML** 58-59cm - **L** 60cm **XL** 61cm



GOLD MATT - GREY DECAL  
1012000004



BLACK MATT - ANTHRACITE DECAL  
1012000000



MILITARY GREEN MATT - GREY DECAL  
1012000005



TITANIUM MATT - SILVER DECAL  
1012000001



BLUE MATT - BLACK DECAL  
1012000002



PEARL WHITE MATT - LIGHT GREY DECAL  
1012000003

# HORNET

HORNET, the first MOMODESIGN full face helmet, represents the evolution of the brand towards a new section of motorbike helmets. It is an essential and versatile full-face helmet, thanks to Zsport graphics. HORNET has been projected for the touring-road customer; it embraces MOMODESIGN peculiar stylistic elements: sport soul, elegance and technical materials.





The ventilation system is composed by:

- chin air vent;
- two frontal air vents;
- two superior air vents with sliding mechanism;
- two air extractors on the chinguard;
- two extractors on back spoiler.

## VENTILATION SYSTEM



## INNER PADDING

The internal liner, inner padding and cheekpads are all made in Satinized Actifresh cloth, are removable and washable.  
Retention system: Micrometric



HORNET has got a contemporary and sport design, with a balance in the contrast between resolved lines and soft shapes. It has been projected by MOMODESIGN Style Centre to give the helmet even more aerodynamics, and to grow performance guaranteeing comfort, noiselessness and safety to the motorcyclist.

## AERODYNAMIC SHAPE

## TWO VISORS

The external visor mechanism has got rapid release and anterior blocking system to reduce the risk of fortuitous opening and closing. The visor is Antiscratch. The internal sun visor can be moved by external activation mechanism.



## CARBON FIBER

HORNET external shell is completely produced in fiberglass and carbon fiber to offer maximum level of safety and protection in a restrained weight. Hornet has been developed in two external shell sizes (sizes from XS to XL) and in two EPS sizes.



COLORS RANGE



SIZES

little shell - XS 53/54 cm  
S 55cm - M 57cm  
big shell - L 59cm - XL 61cm



WHITE/ GREY ASPHALT - YELLOW FLUJO DECAL  
1022001002



GREY ASPHALT/RED BLACK - SILVER DECAL  
1022001003



TITANIUM FROST WHYTE - WHITE DECAL  
1022001000



FLUJO YELLOW WHITE - WHITE DECAL  
1022001001

# ZERO

MOMODESIGN Style Centre has projected ZERO model with a contemporary vision, thinking to those bikers that are looking for a helmet with a modern design and with an heritage spirit. ZERO is an helmet with a handmade and industrial flavour at the same time, it is produced with premium material that guarantee a high quality manufacture, used to refine the internal lining and the back goggle stop with Momodesign logo.



# ZERO

## HERITAGE



### TECHNICAL FEATURES

Composite fiber monocoque shell in two sizes.  
Removable and washable inner padding with high sweat absorption fabric and mesh fabric net with silver ion treatment for an effective bacteria-static action. Leather finishing and goggle older with momodesign logo.  
Dark sun visor.  
Chinstrap with micrometric buckle.

### SIZES

little shell - **XXS** 54cm - **XS** 55cm **S** 56cm - **M** 57cm  
big shell - **ML** 58-59cm - **L** 60cm **XL** 61cm



# ZERO

## HERITAGE



### TECHNICAL FEATURES

Composite fiber monocoque shell in two sizes. Genuine leather details; Removable and washable inner padding with high sweat absorption fabric and mesh fabric net with silver ion treatment for an effective bacteria-static action. Real leather finishing and goggle older with momodesign logo. Dark sun visor; Chinstrap with micrometric buckle.

### SIZES

little shell - **XXS** 54cm - **XS** 55cm **S** 56cm - **M** 57cm  
big shell - **ML** 58-59cm - **L** 60cm **XL** 61cm



# ZERO

PURE



## TECHNICAL FEATURES

ZERO is also available in PURE version with external shell in two monochromatic colours: black matt and white quartz. Composite fiber monocoque shell in two sizes. Removable and washable inner padding with high sweat absorption fabric and mesh fabric net with silver ion treatment for an effective bacteria-static action. Dark sun visor; Chinstrap with micrometric buckle.

## SIZES

little shell - **XXS** 54cm - **XS** 55cm **S** 56cm - **M** 57cm  
big shell - **ML** 58-59cm - **L** 60cm **XL** 61cm



# COLORS RANGE

## HERITAGE



NEW

VINTAGE ANTHRACITE - GOLD/GREY/BLACK DECAL  
1014053001



VINTAGE WHITE - YELLOW/RED/BLACK DECAL  
1014053000

## PURE



MONO BLACK MATT - SILVER DECAL  
1014052001



PURE WHITE QUARTZ - BLACK DECAL  
1014052000



# FGTR

RANGE

Unique shape, elegant core, outstanding design and technical highlights. FGTR was born in 2000 as the Urban Demi-Jet Helmet.

Historically inspired by the helmets of helicopter pilots it became a cultural phenomenon, a conjuncture between Momodesign's racing past and its present as a design brand that is 100% Italian. This is the best product to exemplify Momodesign reinterpretation of an object designed for daily use.



# FGTR

## EVO



### TECHNICAL FEATURES

ABS demi jet shell in two sizes. Removable and washable inner padding with high sweat absorption fabric and mesh fabric net with silver ion treatment for an effective bacteria-static action. Removable and washable cheek pads; Brushed metal screw; Anti-scratch visor UV400 with carbon fiber support; Dark sun visor; Chinstrap with micrometric buckle.

### SIZES

little shell - **XXS** 54cm - **XS** 55cm **S** 56cm - **M** 57cm  
big shell - **ML** 58-59cm - **L** 60cm **XL** 61cm



## TWO VISORS

An adjustable external visor anti-scratch UV 400 in optical Glass with support in carbon fiber and integrated dark sun visor.



Removable inner padding in anti-bacteriological memory fabric with a more comfortable fit.

## INNER PADDING

## INSPIRATION

The inspiration for the shape comes from military helicopterist helmets with their rounded visors. "FGTR" has special soft touch paint, hand-sewn leather and carbon fiber details: a balanced mix of Italian style, technology and design.



## REVERSED T LOGO

The upside-down T logo was a winning concept born to go against the trend and the style of the beginning of 21st century.



# COLORS RANGE



# SIZES

little shell - **XXS** 54cm - **XS** 55cm **S** 56cm - **M** 57cm  
big shell - **ML** 58-59cm - **L** 60cm **XL** 61cm



NEW

MAGENTA GLOSSY - GLITTER DECAL  
Only women size XXS-M  
1001003047



NEW

GREEN METAL - BLACK DECAL  
1001003045



NEW

BLACK GLOSSY - GREY DECAL  
1001003046



BLUE MATT - SILVER DECAL  
1001003038



TOBACCO FROST - BLACK DECAL  
1001003030



BLACK MATT - WHITE DECAL  
1001003003



WHITE QUARTZ GLOSSY - BLACK DECAL  
1001003008



TITANIUM FROST - BLACK DECAL  
1001003029

# FGTR

## L.E.



NEW

GOLD METAL BLACK - BLACK DECAL  
1001006003



### TECHNICAL FEATURES

The limited edition has the shell coated with a special metal light gold matt paint that gives a material and tactile effect in contrast with the black matt painting of the logo. Brushed metal screw; Anti-scratch visor UV400 with carbon fiber support. Chinstrap with micrometric buckle; Removable and washable inner padding with high sweat absorption fabric and mesh fabric net with silver ion treatment for an effective bacteria-static action.

### SIZES

little shell - **XXS** 54cm - **XS** 55cm **S** 56cm - **M** 57cm  
big shell - **ML** 58-59cm - **L** 60cm **XL** 61cm





GRAPHENE 1.0 2019  
1001005001

IN COLLABORATION  
WITH: **iit** ISTITUTO  
ITALIANO DI  
TECNOLOGIA

# RESEARCH INNOVATION TECHNOLOGY

## 1<sup>ST</sup> GRAPHENE MOTORBIKE HELMET

The first graphene helmet ever made, result of the material quality, production process and reached performances. The Graphene due to the material's particular properties, is able to distribute the force of an impact better than any other material. Graphene is also an excellent conductor of heat. This additional property has enabled us to create an avant-garde helmet whose high impact resistance is maintained even under conditions of extreme ambient temperatures. Due to graphene's capacity for dissipating heat, the helmet's thermoregulatory outer shell allows the wearer to feel comfortable even during direct exposure to the sun. The project has come about thanks to the close and prestigious partnership between IIT's Graphene Labs and Momodesign Style Center. Research, innovation and use of two-dimensional materials. A new era of Momodesign helmets.

# FGTR

## JOKER

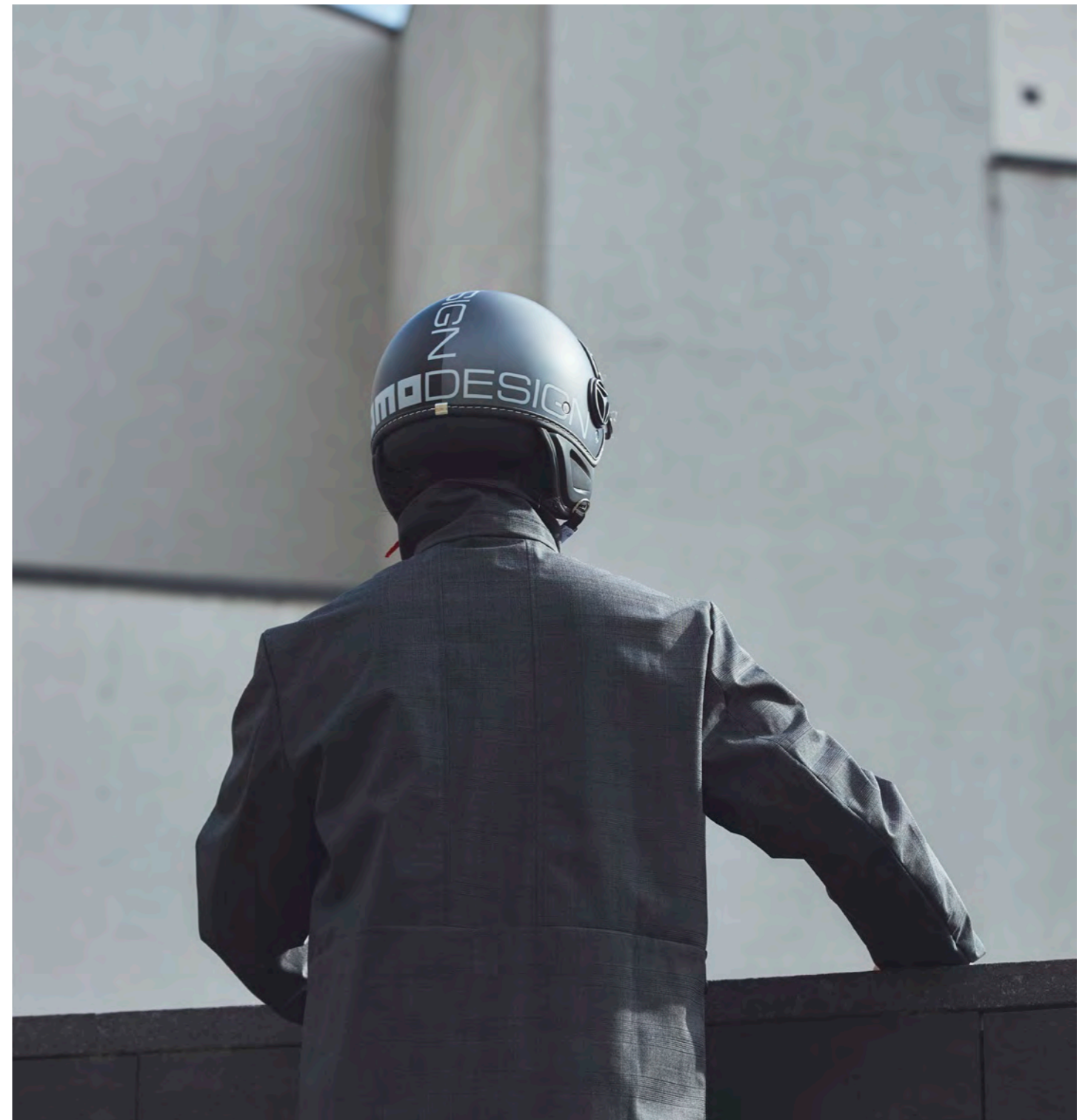


### TECHNICAL FEATURES

The new FGTR range for 2020. A new creative momentum for our demi-jet that, in this special edition, revises the iconic shell with two colours that give a twin and unique personality and a sophisticated look. ABS demi jet shell in two sizes. Removable and washable inner padding with high sweat absorption fabric and mesh fabric net with silver ion treatment for an effective bacteria-static action. Removable and washable cheek pads; Brushed metal screw; Anti-scratch visor UV400 with carbon fiber support; Dark sun visor; Chinstrap with micrometric buckle

### SIZES

little shell - **XXS** 54cm - **XS** 55cm **S** 56cm - **M** 57cm  
big shell - **ML** 58-59cm - **L** 60cm **XL** 61cm



JOKER BLUE/ CLEAR GREY - SILVER DECAL  
1001007001



JOKER BLACK/ DARK GREY - SILVER DECAL  
1001007000

# FGTR

## CLASSIC

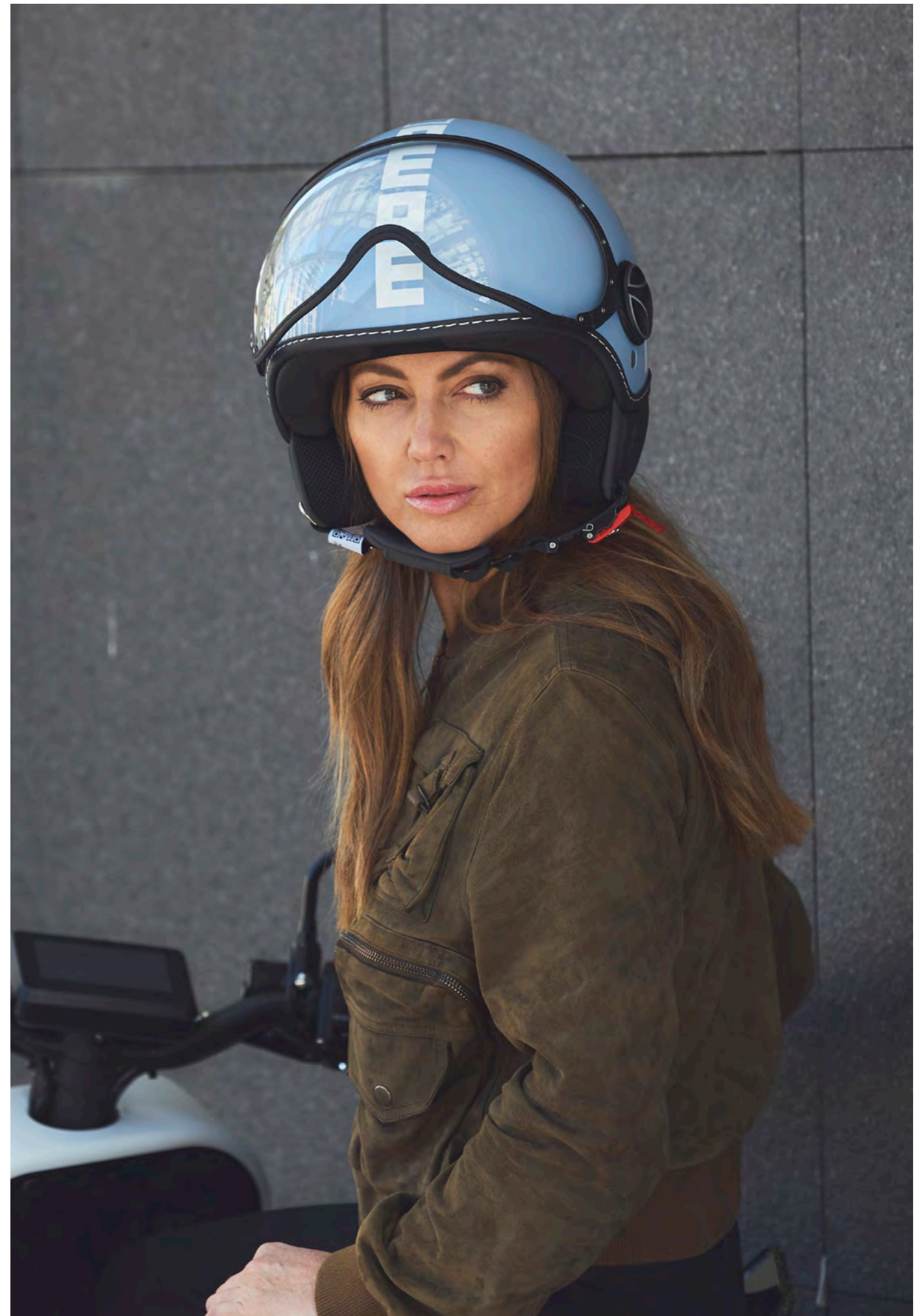


### TECHNICAL FEATURES

FGTR model is also available in Classic version, a reinterpretation of the first traditional FGTR icon model that maintains its stylish features. Anti-scratch visor UV400 with carbon fiber support; ABS demi jet shell in two sizes; Brushed metal screw; Inner padding with high sweat absorption fabric and mesh fabric net with silver ion treatment for an effective bacteria-static action. Chinstrap with micrometric buckle

### SIZES

little shell - **XXS** 54cm - **XS** 55cm **S** 56cm - **M** 57cm  
big shell - **ML** 58-59cm - **L** 60cm **XL** 61cm



# COLORS RANGE



# SIZES

little shell - **XXS** 54cm - **XS** 55cm **S** 56cm - **M** 57cm  
big shell - **ML** 58-59cm - **L** 60cm **XL** 61cm



CORAL MATT - White Decal  
1001002037



RED GLOSSY - White Decal  
1001002038



LIGHT BLUE GLOSSY - White Decal  
1001002043



VIOLET MATT - PINK DECAL  
Only women size XXS-M  
1001002033



MILITARY GREEN MATT - BLACK DECAL  
1001002026



BLACK MATT - SILVER DECAL  
1001002002



GREY MATT/BLACK  
1001002036



WHITE GLOSSY - BLACK DECAL  
1001002006

# FGTR

POP

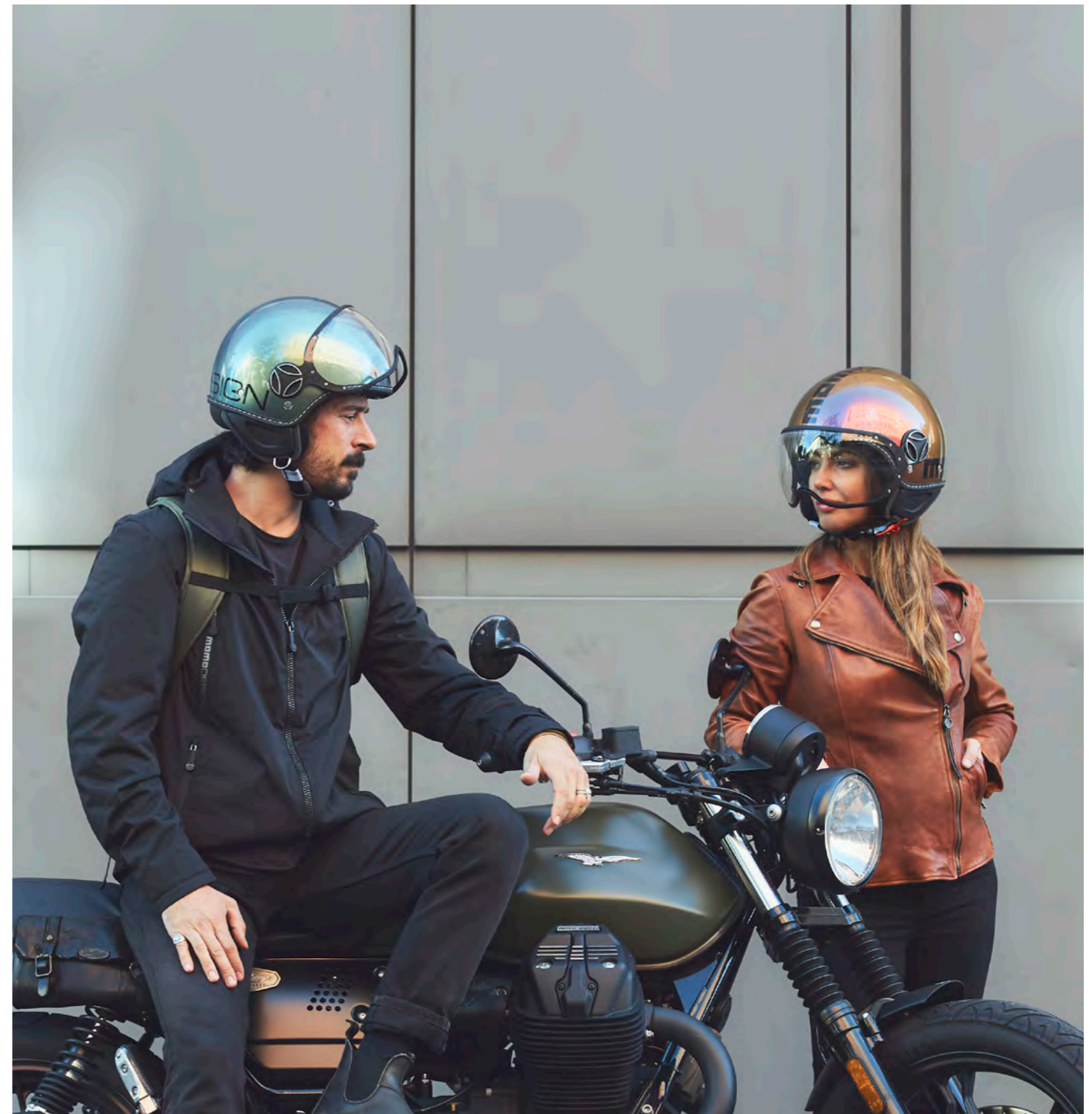


## TECHNICAL FEATURES

This new FGTR edition proposes unexpected iridescent colours, a new varnish which conjures light into changeable Pop hues for a magical effect and a new style vision, Pop is perfect for those who love to dare, be alternative and extravagant. Tones to complement a fashionable Urban rider outfit. Anti-scratch visor UV400 with carbon fiber support; ABS demi jet shell in two sizes; Brushed metal screw; Inner padding with high sweat absorption fabric and mesh fabric net with silver ion treatment for an effective bacteria-static action. Chinstrap with micrometric buckle

## SIZES

little shell - **XXS** 54cm - **XS** 55cm **S** 56cm - **M** 57cm  
big shell - **ML** 58-59cm - **L** 60cm **XL** 61cm



GREEN GLOSSY BLUE - BLACK DECAL  
1001002042



FUXIA COPPER - BLACK DECAL  
1001002041

# FGTR

## MULTICOLOR



### TECHNICAL FEATURES

Inspired by the timeless design of the first FGTR helmet, the multi-coloured logo expresses metropolitan trends. The bright tones of the city lights by night, a new aesthetic that draws inspiration from city trends, satisfying the youngest urban riders. Inner padding with high sweat absorption fabric and mesh fabric net with silver ion treatment for an effective bacteria-static action. Brushed metal screw. Anti scratch visor UV 400 with carbon fiber support ABS demi jet shell in two sizes

### SIZES

little shell - **XXS** 54cm - **XS** 55cm **S** 56cm - **M** 57cm  
big shell - **ML** 58-59cm - **L** 60cm **XL** 61cm



GREY MATT - MULTICOLOR Decal  
1001002040



WHITE MATT - MULTICOLOR Decal  
1001002039

# FGTR

## FLUO

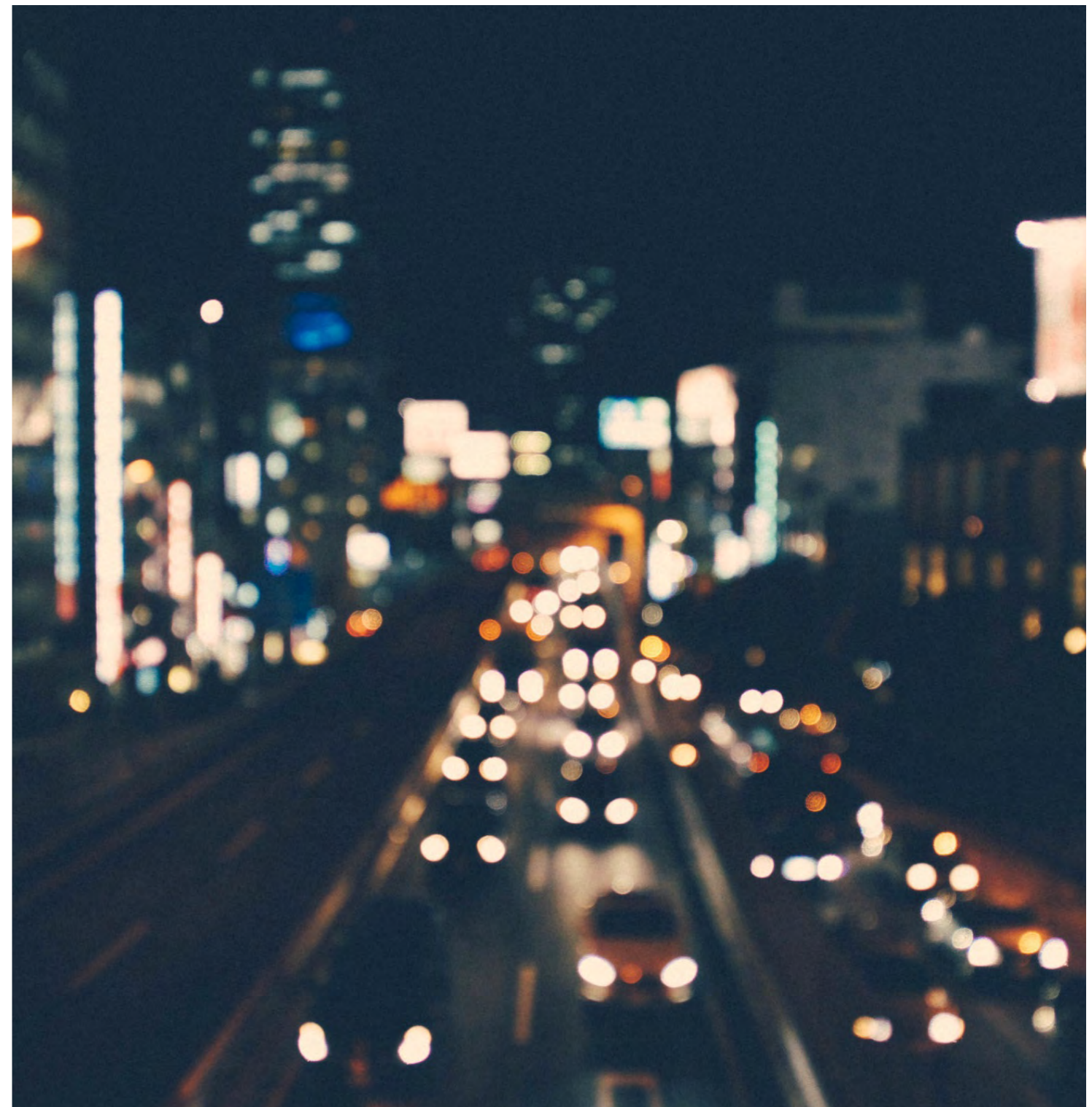


### TECHNICAL FEATURES

FLUO is the version presented with FLUORESCENT DECALS colours in order to increase visibility on the roads. Inner padding with high sweat absorption fabric and mesh fabric net with silver ion treatment for an effective bacteria-static action. ABS demi jet shell in two sizes. Brushed metal screw. Anti-scratch visor UV400 with carbon fiber support. Chinstrap with micrometric buckle

### SIZES

little shell - **XXS** 54cm - **XS** 55cm **S** 56cm - **M** 57cm  
big shell - **ML** 58-59cm - **L** 60cm **XL** 61cm



GLOSSY GREY - FUXIA FLUO Decal  
Only women size XXS-M  
1001004028



BLACK MATT - RED FLUO Decal  
1001004024



BLACK MATT - YELLOW FLUO Decal  
1001004023

# FGTR

## B A B Y



### TECHNICAL FEATURES

FGTR BABY is the demi-jet dedicated to the baby customers. It is inspired by iconic FGTR model shapes and style, being one generation distance between the two. FGTR BABY is the must-have helmet for all the baby riders. The fil rouge with the adult model are the extreme personalized T logo, the visor and the steel visor screws that recall the historic logo. Details that enrich aesthetic features without turning down safety. ABS demi jet shell. Metal screw, Inner padding with high sweat absorption fabric and mesh fabric net with silver ion treatment for an effective bacteria-static action.

### SIZES

little shell - **JXS** 50cm - **JS** 51cm - **JM** 52cm - **JL** 53 cm



RED MATT/MULTI  
1023000003



BLU MATT/MULTI  
1023000000



PINK MATT/MULTI  
1023000002



MILITARY/CAMU  
1023000001

# EAGLE

Tradition and transversality are the two anchors that distinguish the new jet EAGLE. This model unites MOMODESIGN brand heritage and spirit of innovation, addressed to catch new kind of customers.



# EAGLE

## HERITAGE



### TECHNICAL FEATURES

Tradition and transversality are the two anchors that distinguish the new jet EAGLE. This model unites MOMODESIGN brand heritage and spirit of innovation, addressed to catch new kind of customers. ABS full jet shell in two sizes, Real stitching with technical border. Inner padding with high sweat absorption fabric and mesh fabric net. Removable and washable inner padding. Chinstrap with micrometric buckle. Dark sun visor.

### SIZES

little shell - **XXS** 54cm - **XS** 55cm **S** 56cm - **M** 57cm  
big shell - **ML** 58-59cm - **L** 60cm **XL** 61cm



# EAGLE

PURE



## TECHNICAL FEATURES

EAGLE is also available in PURE version with external shell in three monochromatic colours: ivory glossy, black matt and grey matt with logo in contrast color. ABS full jet shell in two sizes; Removable and washable inner padding;. Chinstrap with micrometric buckle. Dark sun visor

## SIZES

little shell - **XXS** 54cm - **XS** 55cm **S** 56cm - **M** 57cm  
big shell - **ML** 58-59cm - **L** 60cm **XL** 61cm





COLORS RANGE

HERITAGE



VINTAGE MILITARY GREEN - BLACK/ YELLOW MILIT GREEN  
1011004002

PURE



IVORY GLOSSY  
1011003001



BLACK MATT  
1011003001

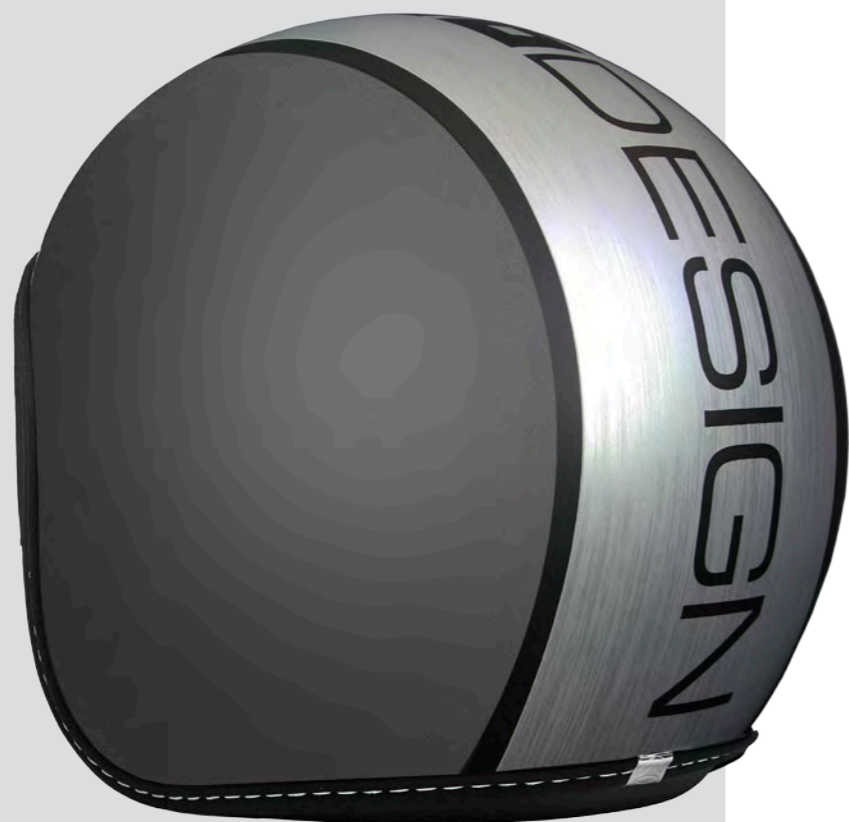


GREY MATT  
1011003000

# BLADE

BLADE is a Jet with a shell of contained dimension with a linear and shiny central graphic characterized by the logo. Blade is designed for the urban riders who are very attentive to fashion and trends and seek high-energy style and color, without sacrificing quality and safety.





## TECHNICAL FEATURES

Inner padding with high sweat absorption fabric and mesh fabric net.  
ABS full jet shell in two sizes.  
Real stitching with technical border, removable and washable inner padding.  
Chinstrap with micrometric buckle, dark sun visor

## SIZES

little shell - **XXS** 54cm - **XS** 55cm **S** 56cm - **M** 57cm  
big shell - **ML** 58-59cm - **L** 60cm **XL** 61cm



NEW  
TITANIUM MATT  
1011002008



BLACK FROST SATIN - BLACK DECAL  
1011002000



GREY MATT - RED FLUO  
1011002002

# AVIO

AVIO is an aeronautical inspired demi jet helmet totally made out of composite material to guarantee higher safety standards and lightness. Equipped with a medium visor with a steel visor support to optimize the performance and to emphasize the dynamic and sportive style of the particular shell design.





## TECHNICAL FEATURES

AVIO is an aeronautical inspired demi jet helmet totally made out of composite material to guarantee higher safety standards and lightness. Equipped with a medium visor with a steel visor support to optimize the performance and to emphasize the dynamic and sportive style of the particular shell design. Fiberglass and carbon monocoque shell in two sizes. Removable and washable inner padding with high sweat absorption fabric and mesh fabric net with silver ion treatment for an effective bacteria-static action. Removable and washable cheek pads. Chinstrap with micrometric buckle. Brushed metal screw. Anti-scratch visor UV400 with new steel support. Dark sun visor.

## SIZES

little shell - **XXS** 54cm - **XS** 55cm **S** 56cm - **M** 57cm  
big shell - **ML** 58-59cm - **L** 60cm **XL** 61cm



GREEN - WHITE - RED 150°- BLACK OUTLINE DECAL  
1003008001



GLOSSY BLACK CARBON - SILVER OUTLINE DECAL  
1003009000



ANTHRACITE FROST CARBON - BLACK DECAL  
1003009001

# MINIMOMO

The logo becomes the main actor on the sides of the MINIMOMO helmet with special inserts in aluminium net. A minimalist design model, available in a sophisticated colour range. Characterized by its deliberately simple linear design, this helmet is designed for the most stylish motorcycle-scooter riders who will wear it when riding their own special bikes.





## TECHNICAL FEATURES

The logo becomes the main actor on the sides of the MINIMOMO helmet with special inserts in aluminium net. A minimalist design model, available in a sophisticated colour range. Characterized by its deliberately simple linear design, this helmet is designed for the most stylish motorcycle-scooter riders who will wear it when riding their own special bikes. inner padding with high sweat absorption fabric and mesh fabric net with silver ion treatment for an effective bacteria-static action. ABS demi jet shell in two sizes. Chinstrap with micrometric buckle.

## SIZES

little shell - **XXS** 54cm - **XS** 55cm **S** 56cm - **M** 57cm  
big shell - **ML** 58-59cm - **L** 60cm **XL** 61cm



MILITARY GREEN MATT - BLACK DECAL  
1002003000



ALLUMINIUM FROST-BLACK DECAL  
1002003004



BLACK MATT- SILVER DECAL  
1002003005

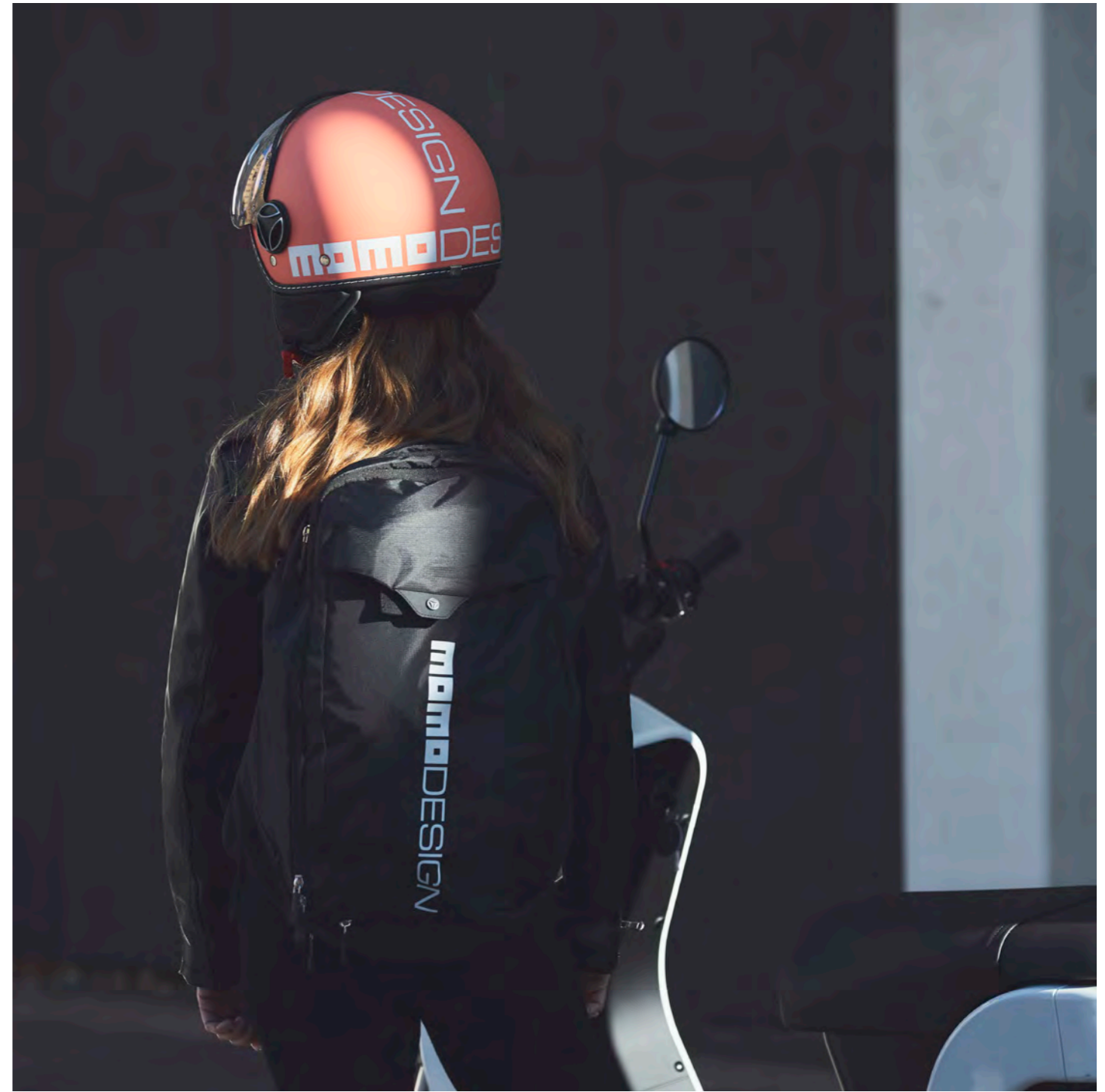
# MD - ONE

## BACKPACK



The sporty identity of MOMODESIGN seen in its performance, durability, reliability and lightweight design is all embodied in this backpack. A distinctive stylish character, it has drawn its inspiration from the iconic MOMODESIGN helmet. Designed for bikers who are looking for the perfect blend of style and functionality, made with an ultra-light fabric, it has been created for the most demanding and discerning touring riders. MD ONE backpack is perfect to move around the city, for longer trips out of town. The backpack features an helmet holder, a bag, rain coat and a waterproof pocket for a unique way to experience urban motorcycling with authentic MOMODESIGN style.

Rip stop 100% nylon fabric with PU back coating. Nylon siral zipper reverse mount. Helmet holder pocket. Helmet holder pocket. Waterproof cover pocket. Microfiber 98% polyester 2% elastane jersey knit.



BLACK - WHITE  
ZAI00010100



MILITARY GREEN - BLACK  
ZAI00040100



BLUE - SILVER  
ZAI00020100



TITANIUM - BLACK  
ZAI00030100

# ACCESSORIES



SPARE PARTS - PRICES



LONG CLEAR VISOR  
CARBON SUPPORT



80% DARK VISOR  
LEATHER SAWED TRIM  
CARBON SUPPORT



NEW SUN VISOR  
80% DARK



CLEAR VISOR  
METAL SUPPORT  
TRASPARENT



LONG 80% DARK VISOR  
CARBON SUPPORT



NEW SUN VISOR  
50% DARK



CLEAR VISOR  
METAL SUPPORT  
TRASPARENT



80% DARK VISOR  
METAL SUPPORT



INNER  
PAD KIT



SIDE BRUSHED  
LOGO KIT



VISOR  
MECHANISM KIT



FGTR CLASSIC / FGTR FLUO  
CHEEK PADS KIT



FGTR EVO / AVIO  
CHEEK PADS KIT



MINIMOMO  
CHEEK PADS KIT



ARROW / RAPTOR  
CHEEK PADS KIT

CODE	DESCRIPTION	CLS/FLUO	EAGLE	BLADE	EVO	MINIMOMO S	AVIO 2016	JET BABY	RAPTOR	ZERO	SUGGESTED RETAIL PRICE
10990100000	STANDARD VISOR CLEAR SCRATCH RESISTANT	x			x						€ 50,00
10990100010	STANDARD VISOR 80% DARK SCRATCH RESISTANT	x			x						€ 50,00
10990101000	LONG VISOR CLEAR SCRATCH RESISTANT	x			x						€ 50,00
10990101010	LONG VISOR 80% DARK SCRATCH RESISTANT	x			x						€ 50,00
10990300000	VISOR CLEAR SCRATCH RESISTANT						x				€ 50,00
10990300010	DARK VISOR 80% SCRATCH RESISTANT						x				€ 50,00
10990100050	VISOR CLEAR SCRATCH RESISTANT GRAPHENE	x			x						€ 60,00
10992000000	VISOR CLEAR SCRATCH RESISTANT JET BABY							x			€ 50,00
10990104010	DARK SUN VISOR 50%		x	x	x		x		x	x	€ 25,00
10990104020	DARK SUN VISOR 80%		x	x	x		x		x	x	€ 25,00
10990102000	VISOR MECHANISM	x			x		x				€ 15,00
10990109000	NEW VISOR SCREW LOGO	x			x		x				€ 23,00
10990107011	INNER PADDING SIZE: XXS - EVO/AVIO				x		x				€ 38,00
10990107012	INNER PADDING SIZE:XS - EVO/AVIO				x		x				€ 38,00
10990107013	INNER PADDING SIZE: S - EVO/AVIO				x		x				€ 38,00
10990107014	INNER PADDING SIZE: M - EVO/AVIO				x		x				€ 38,00
10990107015	INNER PADDING SIZE: ML - EVO/AVIO				x		x				€ 38,00
10990107016	INNER PADDING SIZE:L - EVO/AVIO				x		x				€ 38,00
10990107017	INNER PADDING SIZE: XL - EVO/AVIO				x		x				€ 38,00
10991100011	INNER PADDING SIZE: XXS - EAGLE/BLADE		x	x							€ 38,00
10991100012	INNER PADDING SIZE:XS - EAGLE/BLADE		x	x							€ 38,00
10991100013	INNER PADDING SIZE: S - EAGLE/BLADE		x	x							€ 38,00
10991100014	INNER PADDING SIZE: M - EAGLE/BLADE		x	x							€ 38,00
10991100015	INNER PADDING SIZE: ML - EAGLE/BLADE		x	x							€ 38,00
10991100016	INNER PADDING SIZE:L- EAGLE/BLADE		x	x							€ 38,00
10991100017	INNER PADDING SIZE: XL - EAGLE/BLADE		x	x							€ 38,00
10991400011	INNER PADDING SIZE: XXS - RAPTOR/ZERO								x	x	€ 47,00
10991400012	INNER PADDING SIZE:XS - RAPTOR/ZERO								x	x	€ 47,00
10991400013	INNER PADDING SIZE: S - RAPTOR/ZERO								x	x	€ 47,00
10991400014	INNER PADDING SIZE: M - RAPTOR/ZERO								x	x	€ 47,00
10991400015	INNER PADDING SIZE: ML - RAPTOR/ZERO								x	x	€ 47,00
10991400016	INNER PADDING SIZE:L - RAPTOR/ZERO								x	x	€ 47,00
10991400017	INNER PADDING SIZE: XL - RAPTOR/ZERO								x	x	€ 47,00
10990108011	CHEEK PADS (PAIR) ANTHRACITE - XXS				x		x				€ 26,00
10990108012	CHEEK PADS (PAIR) ANTHRACITE - XS/XL				x		x				€ 26,00
10990200001	CHEEK PADS (PAIR) MINIMOMO BLACK - XXS					x					€ 26,00
10990200002	CHEEK PADS (PAIR) MINIMOMO BLACK - XS/XL					x					€ 26,00
10991401013	CHEEK PADS (PAIR) RAPTOR/ZERO - XXS/XS								x	x	€ 30,00
10991401012	CHEEK PADS (PAIR) RAPTOR/ZERO - S/ML								x	x	€ 30,00
10991401011	CHEEK PADS (PAIR) RAPTOR/ZERO - ML/L/XL								x	x	€ 30,00

MOMODESIGN helmets are manufactured and distributed worldwide exclusively by:  
Logico Design S.r.l. - Piazza Kennedy, 4 – 37039 Tregnago - VR – Italy - Phone: +39 (0)45 6500447  
Fax: +39 (0)45 7808214 - [info.LD@joysonsafety.com](mailto:info.LD@joysonsafety.com)

LOGICO DESIGN belongs to JOYSON SAFETY SYSTEM group, a global leader in advanced automotive safety systems, making the "safety culture" for which the company is known worldwide the new cornerstone of Momodesign. This partnership helps to bring ever-increasing levels of safety and technology to motorbike helmets, the pivotal products of MOMODESIGN.



[www.momodesign.com](http://www.momodesign.com)

